

# CLAHRC GM

Professor Ruth Boaden

Director – NIHR Collaboration for  
Leadership in Applied Health Research  
and Care (CLAHRC) Greater Manchester

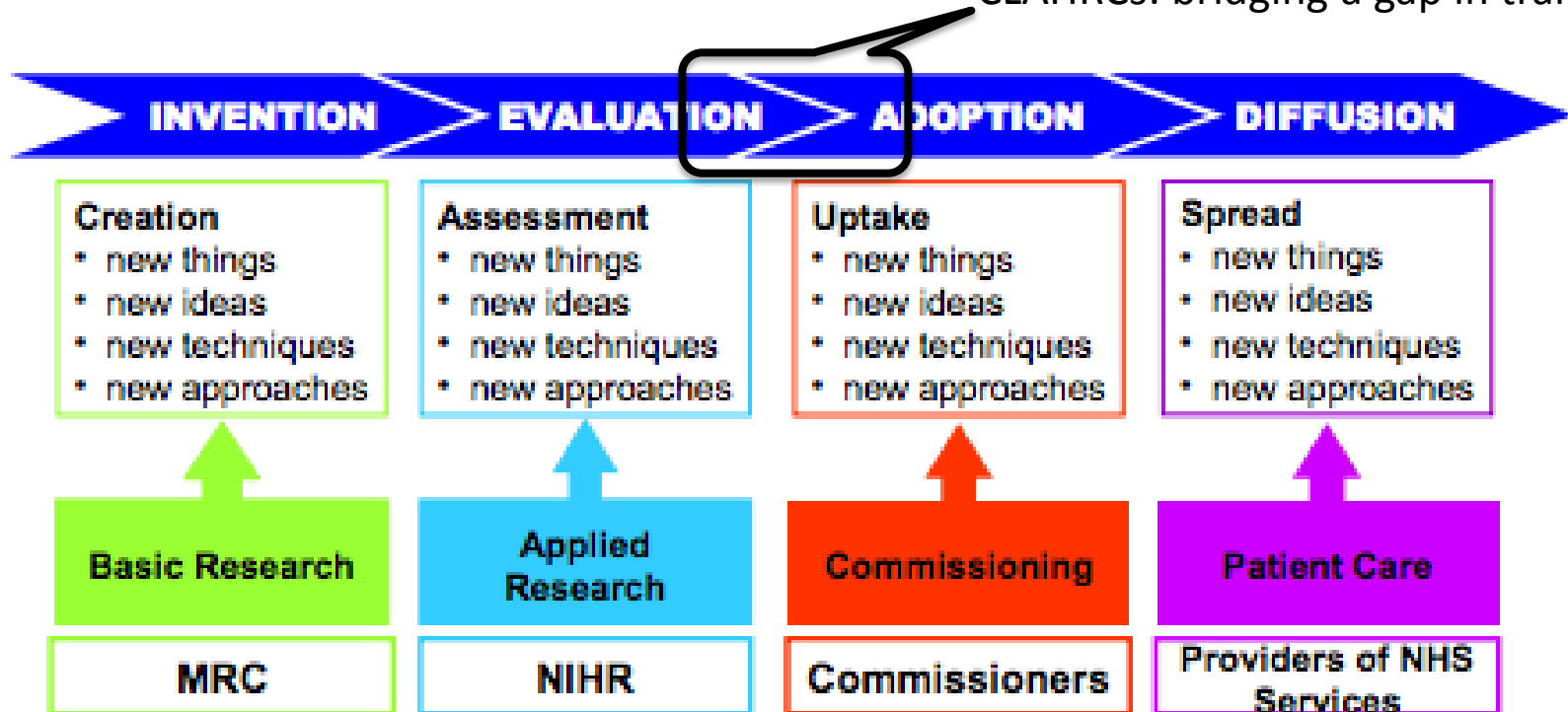
[www.clahrc-gm.nihr.ac.uk](http://www.clahrc-gm.nihr.ac.uk)

[clahrc@srft.nhs.uk](mailto:clahrc@srft.nhs.uk)

0161 206 8551

# The Research Pathway

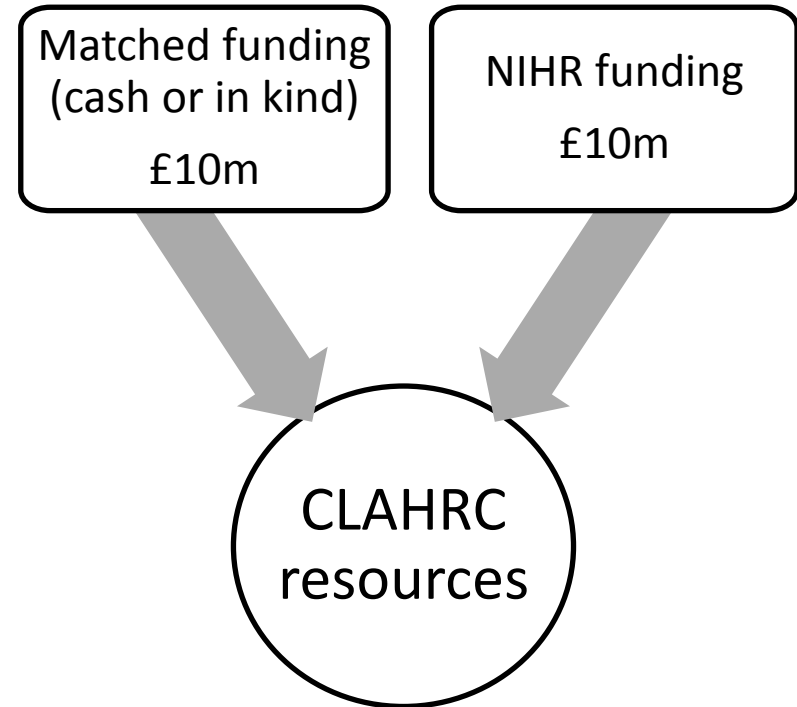
CLAHRCs: bridging a gap in translation



*“NIHR CLAHRCs address the **evaluation** and **identification** of those **new interventions** that are effective and appropriate for everyday use in the NHS and the **process of their implementation** into routine clinical practice”*

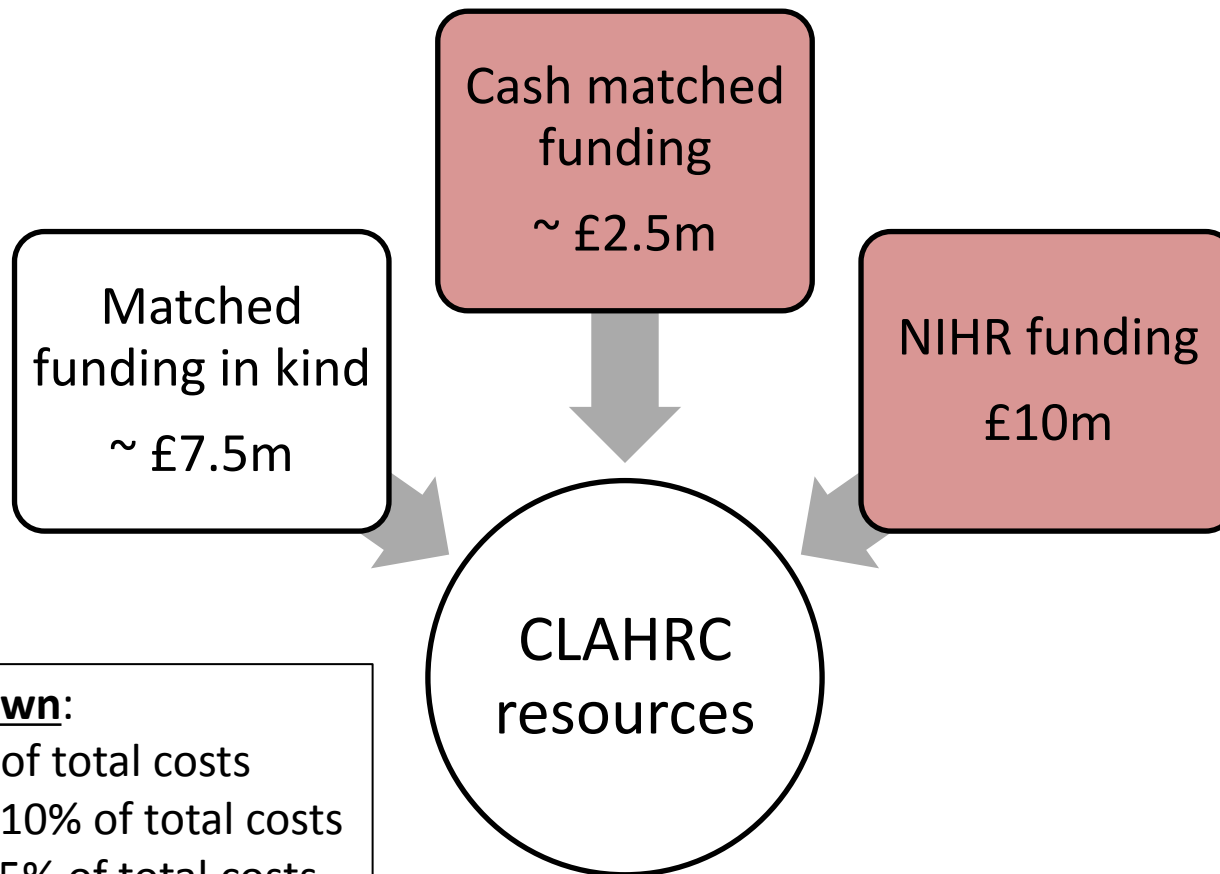
# Large scale NIHR investment

*“£124 million has been allocated to 13 new collaborations that demonstrated a substantial portfolio of world-class applied health research, particularly in research targeted at chronic disease and public health interventions, and held a track record in translating research findings into improved outcomes for patients”*





# CLAHRC GM resources: 2014-2019



## **Budget breakdown:**

Staff costs: 75% of total costs

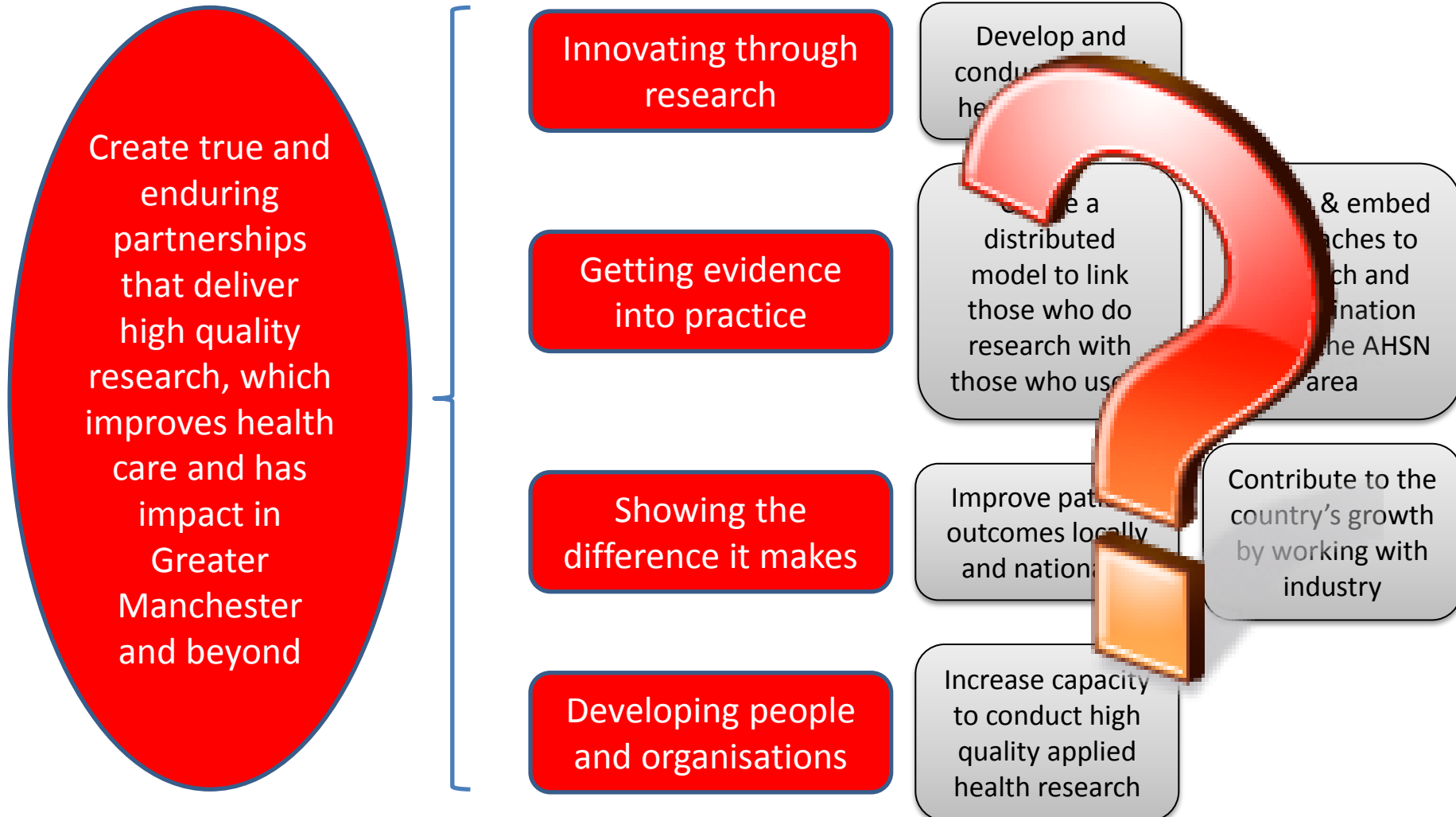
Non-staff costs: 10% of total costs

Support costs: 15% of total costs

# CLAHRC GM vision and objectives



# NIHR success criteria



Primary  
Care

# Themes of work

Community  
Services

Assess and  
improve:

- cardiovascular health;
- access to primary care;
- patient safety

Assess and  
improve:

- wound care;
- end of life care

Assess and improve care for  
people with:

- multiple long-term conditions;
- mental health issues;
- stroke

CLAHRC-funded  
staff  
University  
NHS  
External

Patient-centred care



# Primary Care

# Community Services

**Stakeholder engagement**

Assess and improve:

- cardiovascular health;
- access to primary care;
- patient safety

Assess and improve:

- wound care;
- end of life care

**Capacity development**

- Assess and improve care for people with:
- multiple long-term conditions;
  - mental health issues;
  - stroke

**Learning and evaluation**

# Patient-centred care

## Primary Care

- **NHS Salford CCG**
- NHS Central Manchester CCG
- NHS Eastern Cheshire CCG
- Greater Manchester CCGs Service Transformation Team
- NHS England Greater Manchester Local Area Team (LAT)
- GM Academic Health Sciences Network (AHSN)

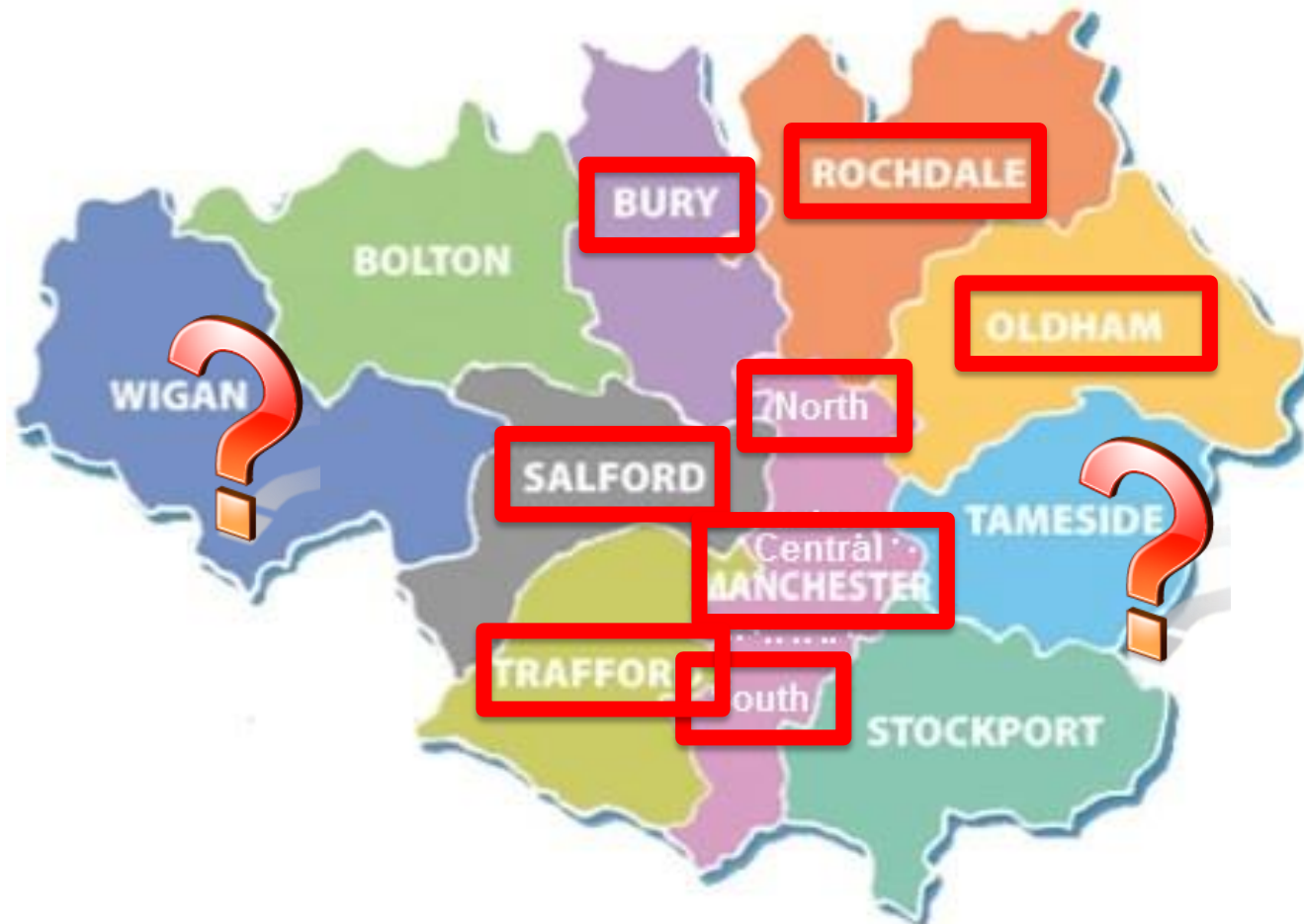
- **Manchester Mental Health and Social Care NHS Trust (MMHSCT)**
- Mental Health Matters and Inclusion Matters (Merseyside)
- South Staffordshire and Shropshire Partnership NHS Trust

# Partners

- Marie Curie
- Macmillan
- **Central Manchester University Hospitals NHS Foundation Trust (CMFT)**
- **Salford Royal NHS Foundation Trust (SRFT)**
- **University Hospital of South Manchester Foundation Trust (UHSM)**
- Pennine Care NHS Foundation Trust
- Heidelberg Engineering
- Arthritis UK Epidemiology Unit
- **Manchester Academic Health Sciences Centre (MAHSC)**
- The North of England Health e-Research Centre (HeRC)
- The Stroke Association

## Community Services

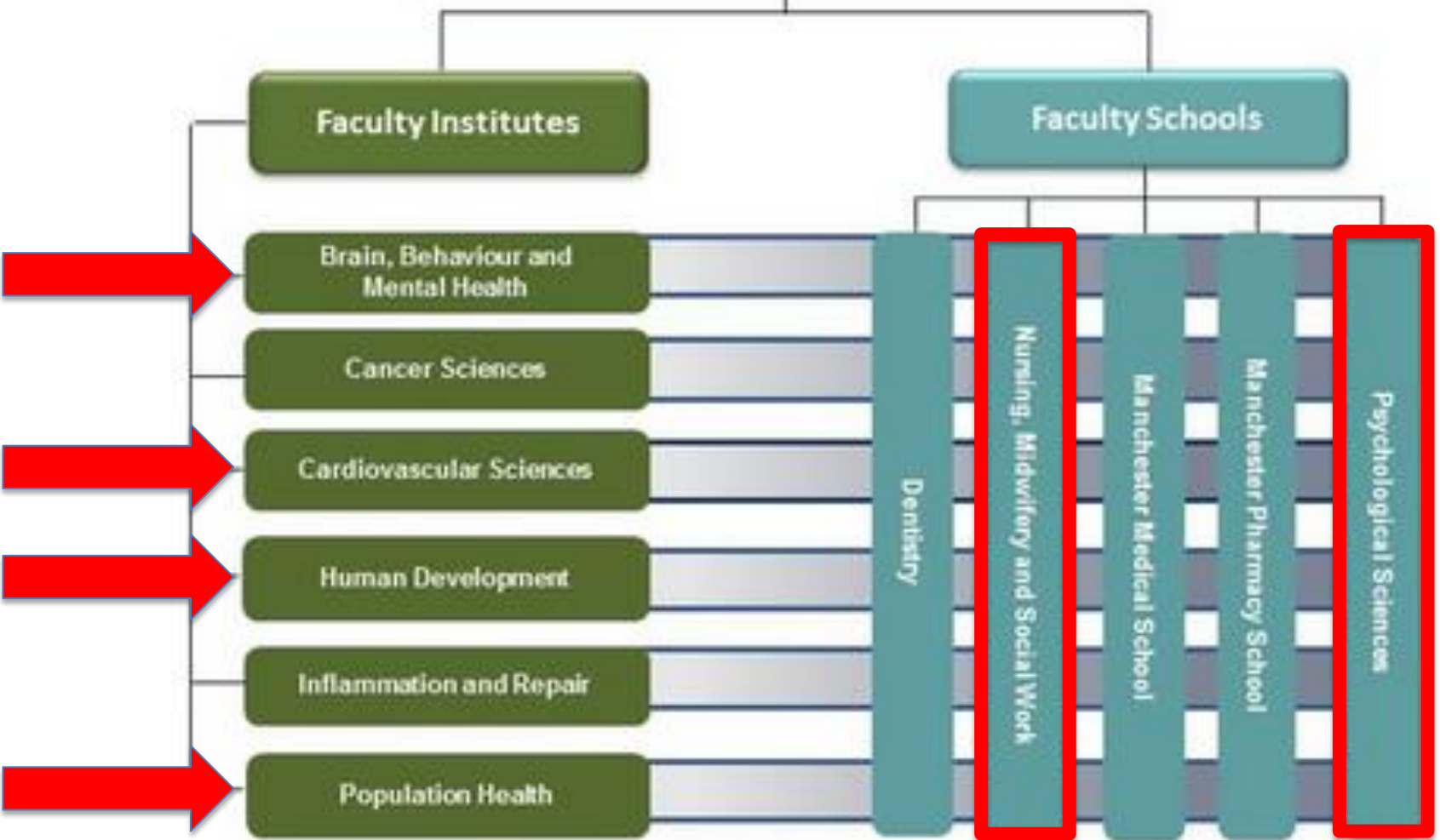
# Greater Manchester



**And beyond ... East Cheshire, Merseyside**

# Faculty of Medical and Human Sciences

+ Humanities



# AHSNs, AHSCs and the Research and Innovation Landscape

NIHR  
Infrastructure  
Clinical Research Network

NIHR  
Infrastructure  
BRCs, BRUs, CRFs



MRC  
Programmes

NIHR  
Programmes

NHS  
Patient Care

NHS  
Patient Care

INVENTION

EVALUATION

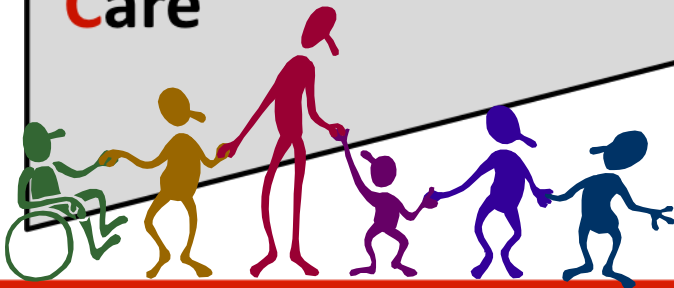
ADOPTION

DIFFUSION



# How do we work?

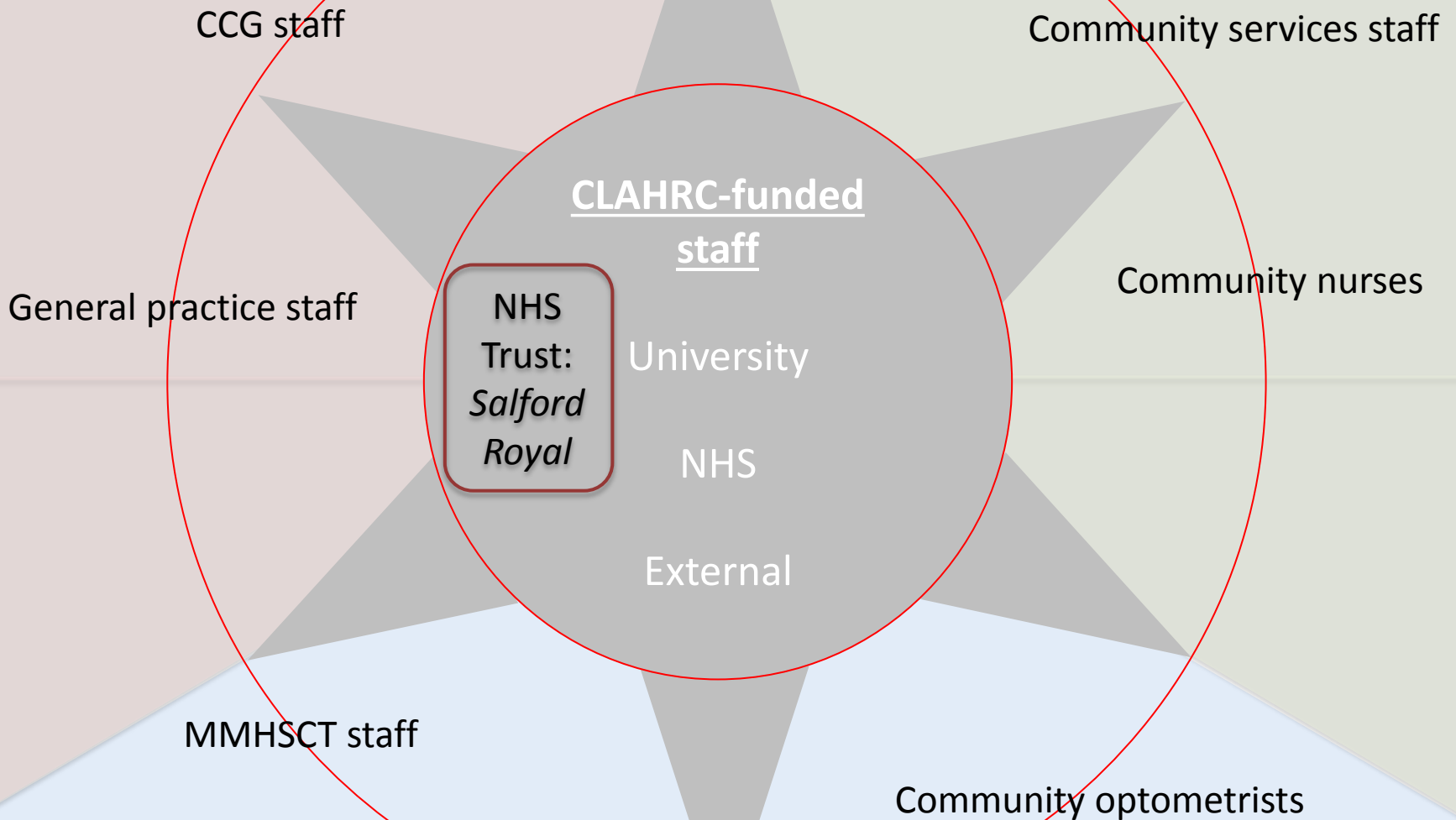
**C**ollaboration for  
**L**eadership in  
**A**ppplied  
**H**ealth  
**R**esearch and  
**C**are



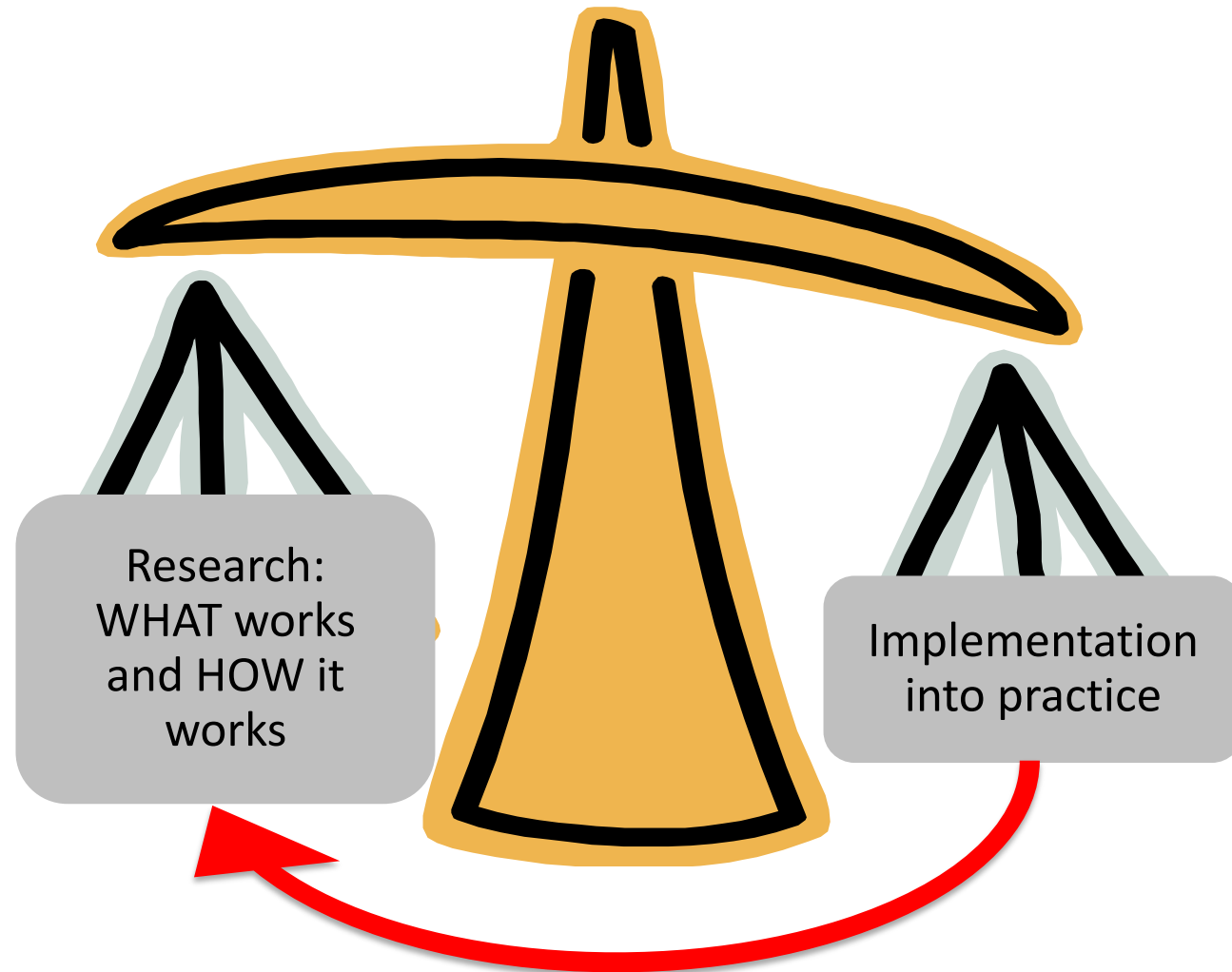
Projects are carried out by:

- staff from partner organisations
- working in teams with CLAHRC GM staff
  - that include researchers from the University of Manchester **and**
  - project management and improvement specialists from the NHS

# Staff from the NHS and partners



# The balance will vary





# It's not linear:



# NIHR message to CLAHRCs



*National Institute for  
Health Research*

## Take-Home Message

- ✓ There are currently huge **opportunities** for health research
- ✓ There are also huge **expectations** on delivery - for patients and the economy
- ✓ **CLAHRCs are at the centre** of the opportunity and the expectation

Primary  
Care

# Themes of work

Community  
Services

Assess and  
improve:

- wound care;
- end of life care

## CLAHRC-funded

### staff

University  
NHS  
External

- **Central Manchester University Hospitals NHS Foundation Trust (CMFT)**
- **Salford Royal NHS Foundation Trust (SRFT)**
- **University Hospital of South Manchester Foundation Trust (UHSM)**
- **Pennine Care NHS Foundation Trust**
- **Marie Curie**
- **Macmillan**

Patient-centred care

# Senior Leadership Team

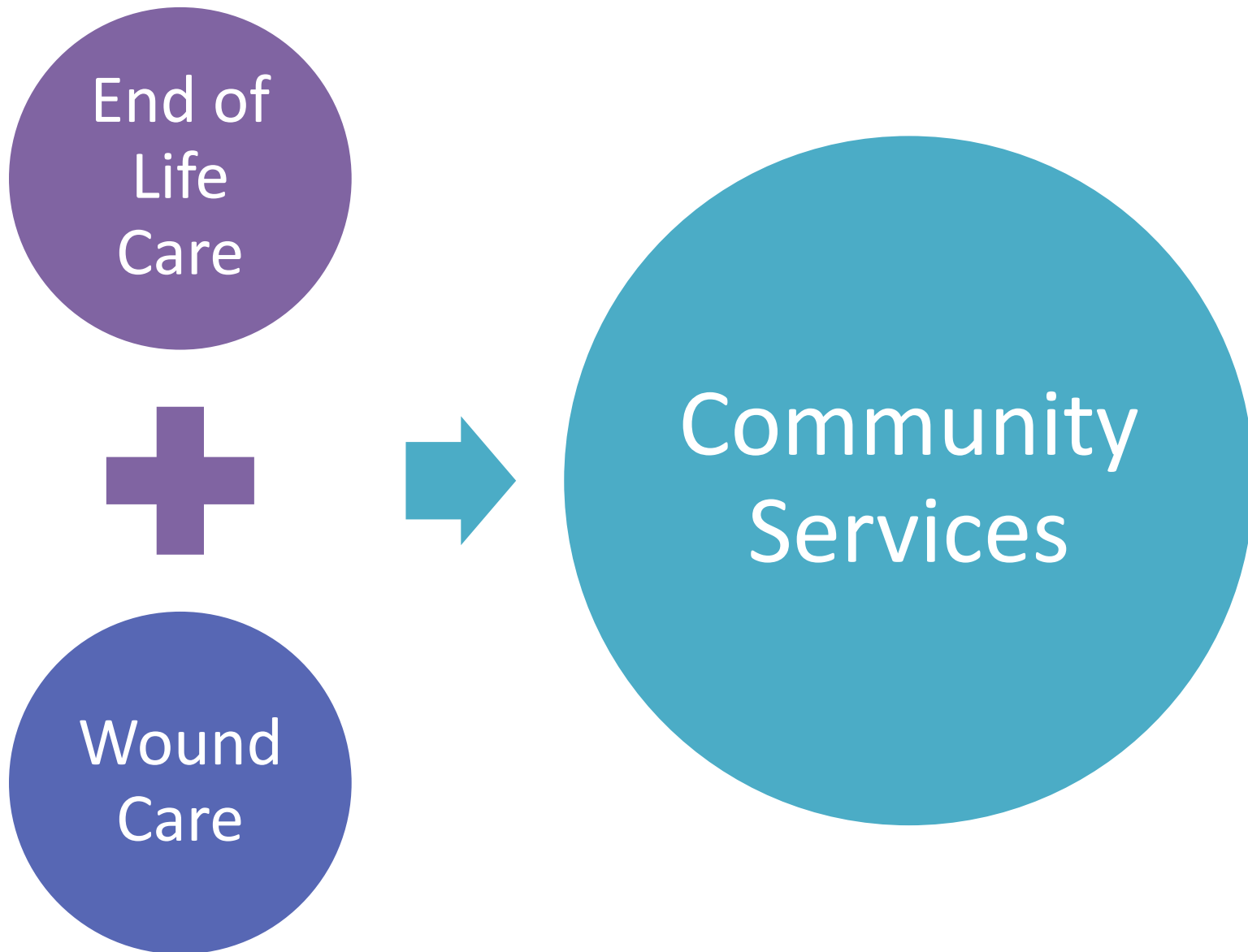
<b>Director</b>	<i>Prof. Ruth Boaden (MBS)</i>
<b>Deputy Director</b>	<i>Prof. Karen Luker (SNMSW)</i>
<b>Chair of Board</b>	Sir David Dalton

<b>Theme</b>	<b>Co-ordinators</b>
Patient-centred care	<i>Prof. Karina Lovell (SNMSW) &amp; Dr Audrey Bowen (School of Psychological Sciences)</i>
Primary Care	<i>Dr Kath Checkland (Centre for Primary Care)</i>
Community Services	<i>Prof. Nicky Cullum (SNMSW)</i>

Operations and Projects Manager: Sue Wood  
 Engagement and Networks Manager: Joanne Thomas  
 Corporate Services Manager: Cathie Stokes

# CLAHRC GM

## COMMUNITY SERVICES THEME



# Objectives

- Promote importance of research amongst stakeholders (1-2 years)
- Build networks and environments with an appetite for conducting and implementing research in wound and EOL care (1-2 years)
- Develop new knowledge about research implementation in community services (2-3 years)
- Collaborate with stakeholders to identify priorities for research and implementation (2-3 years)
- Develop programmes of research responsive to local need (2-5 years)

# Wound Care Objectives Years 1-2

Overall goal is to build a network for collaboration in wounds research and implementation

- Identify key stakeholders and map activity
  - Scoping current wound care delivery
  - Large prevalence survey and audit of complex wound care
- Collaborate to Identify and develop research areas/priorities for research implementation
- Set up and conduct new projects (both research and implementation)



# End of Life Care Objectives Years 1 and 2

- Build a successful network/environment for doing and using research in end of life care
- Scoping Pathways of Care
  - Mapping variations in end of life care using data from a variety of sources; identify factors which support dying in place of choice
- Empowering family carers
  - Design and evaluate interventions to enhance carers' knowledge, skills and confidence in end of life care including examining carer support needs for use in discharge from acute services

# Projects in End of Life Care

- Macmillan Cancer Improvement Partnership in Manchester - scoping cancer specific learning and development needs of clinical and non-clinical staff
- Living Well Academy (Pennine Care) – resources for patients and carers in range of areas including EoL care
- Marie Curie: Carer Support Needs (discharge from acute care)

# Contact us

[www.clahrc-gm.nihr.ac.uk](http://www.clahrc-gm.nihr.ac.uk)

[clahrc@srft.nhs.uk](mailto:clahrc@srft.nhs.uk)

0161 206 8551