



Dark Trees

Hazel Aimson

Dark Trees

Hazel Aimson

Beginner's piece created at the Day Centre at my Local Hospice.



theWhitworth



NHS
Greater Manchester and Eastern Cheshire
Strategic Clinical Networks

NHS
National Institute for
Health Research

Postcards sponsored by NIHR CLAHRC Greater Manchester

The National Institute for Health Research Collaboration for Leadership in Applied Health Research and Care (NIHR CLAHRC) Greater Manchester is a partnership between providers and commissioners from the NHS, industry, the third sector and the University of Manchester. We aim to improve the health of people in Greater Manchester and beyond through carrying out research and putting it into practice. <http://clahrc-gm.nihr.ac.uk>



Passing

Tracy Hamrang

Passing

Tracy Hamrang

The idea of passing on being assimilated back into the World. The Kimono presents the physical body melting into the environment. The soul turning into a crane – Indian symbol of freedom – the gnarled blossom tree – rebirth. Mt Fuji in the background -a place of the Spirits.



theWhitworth



NHS
Greater Manchester and Eastern Cheshire
Strategic Clinical Networks

NHS
National Institute for
Health Research

Postcards sponsored by NIHR CLAHRC Greater Manchester

The National Institute for Health Research Collaboration for Leadership in Applied Health Research and Care (NIHR CLAHRC) Greater Manchester is a partnership between providers and commissioners from the NHS, industry, the third sector and the University of Manchester. We aim to improve the health of people in Greater Manchester and beyond through carrying out research and putting it into practice. <http://clahrc-gm.nihr.ac.uk>



Remember Me

Doreen Keithley and Julie Lindley

Remember Me

Doreen Keithley and Julie Lindley

We had made poppies for Remembrance Day to raise money for the Poppy Appeal.
Our nurses wore them with pride.

Whilst visiting one of our palliative patients at home, he enquired about the poppy and asked if it was possible to order three poppies for his wife and two daughters. He felt it would be an appropriate everlasting remembrance of him. It was a privilege and an honour to meet his dying wish.
This piece of art is our tribute to him and all those who have given so much.



theWhitworth




Greater Manchester and Eastern Cheshire
Strategic Clinical Networks


National Institute for
Health Research

Postcards sponsored by NIHR CLAHRC Greater Manchester

The National Institute for Health Research Collaboration for Leadership in Applied Health Research and Care (NIHR CLAHRC) Greater Manchester is a partnership between providers and commissioners from the NHS, industry, the third sector and the University of Manchester. We aim to improve the health of people in Greater Manchester and beyond through carrying out research and putting it into practice. <http://clahrc-gm.nihr.ac.uk>



Curtains

Ella Dawson

Curtains

Ella Dawson

This photograph depicts the bereavement of a loved one's death. The title "Curtains" derives from the way the make's hands are positioned, to represent drawing the curtains in someone's life. The black and white, dark, moody atmosphere created by low light signifies death and decay and how someone would feel enclosed and lonely after a loved one's passing.



theWhitworth



NHS
Greater Manchester and Eastern Cheshire
Strategic Clinical Networks

NHS
National Institute for
Health Research

Postcards sponsored by NIHR CLAHRC Greater Manchester

The National Institute for Health Research Collaboration for Leadership in Applied Health Research and Care (NIHR CLAHRC) Greater Manchester is a partnership between providers and commissioners from the NHS, industry, the third sector and the University of Manchester. We aim to improve the health of people in Greater Manchester and beyond through carrying out research and putting it into practice. <http://clahrc-gm.nihr.ac.uk>



Life: Brief intermission between birth and death(B)

Amany Elsayed

Life: Brief intermission between birth and death(B)

Amany Elsayed

Death is not the greatest loss in life, it is the void that resides after life. We are only human for a short while. We often forget to appreciate the unseen beauty. Silence most of all.



theWhitworth



NHS
Greater Manchester and Eastern Cheshire
Strategic Clinical Networks

NHS
National Institute for
Health Research

Postcards sponsored by NIHR CLAHRC Greater Manchester

The National Institute for Health Research Collaboration for Leadership in Applied Health Research and Care (NIHR CLAHRC) Greater Manchester is a partnership between providers and commissioners from the NHS, industry, the third sector and the University of Manchester. We aim to improve the health of people in Greater Manchester and beyond through carrying out research and putting it into practice. <http://clahrc-gm.nihr.ac.uk>



Liam Owen

Change



Liam Owen

Liam Owen

Change

Liam Owen

Two watercolour paintings to express the changing roles between this mother and daughter and the change in emotions that come with this process as both grow older together.



theWhitworth



 **Greater Manchester and Eastern Cheshire
Strategic Clinical Networks**

 **National Institute for
Health Research**

Postcards sponsored by NIHR CLAHRC Greater Manchester

The National Institute for Health Research Collaboration for Leadership in Applied Health Research and Care (NIHR CLAHRC) Greater Manchester is a partnership between providers and commissioners from the NHS, industry, the third sector and the University of Manchester. We aim to improve the health of people in Greater Manchester and beyond through carrying out research and putting it into practice. <http://clahrc-gm.nihr.ac.uk>

Erin age 7
WE WILL MISS!
YOU FOREVER!

Love



you



for



ever

Erin age 7



Daddy's Girl

Erin Hughes

Daddy's Girl

Erin Hughes

Loss of Daddy



theWhitworth



NHS
Greater Manchester and Eastern Cheshire
Strategic Clinical Networks

NHS
National Institute for
Health Research

Postcards sponsored by NIHR CLAHRC Greater Manchester

The National Institute for Health Research Collaboration for Leadership in Applied Health Research and Care (NIHR CLAHRC) Greater Manchester is a partnership between providers and commissioners from the NHS, industry, the third sector and the University of Manchester. We aim to improve the health of people in Greater Manchester and beyond through carrying out research and putting it into practice. <http://clahrc-gm.nihr.ac.uk>



New Beginnings

Sarah Pendlebury and Amanda Whitefoot

New Beginnings

Sarah Pendlebury and Amanda Whitefoot

This piece represents the concept that the end of one thing leads to the beginning of another. Spring comes from the end of the Winter, and sometimes moving forward means leaving the past behind, however, we all leave behind a legacy.



theWhitworth



NHS
Greater Manchester and Eastern Cheshire
Strategic Clinical Networks

NHS
National Institute for
Health Research

Postcards sponsored by NIHR CLAHRC Greater Manchester

The National Institute for Health Research Collaboration for Leadership in Applied Health Research and Care (NIHR CLAHRC) Greater Manchester is a partnership between providers and commissioners from the NHS, industry, the third sector and the University of Manchester. We aim to improve the health of people in Greater Manchester and beyond through carrying out research and putting it into practice. <http://clahrc-gm.nihr.ac.uk>



Water to Water

Angus Carolan

I was recently discussing this subject with a friend and she agreed with me that when we die, we should have our ashes spread on a favourite stretch of water.

Thinking how the body is almost 60% water and we originally came from the water millions of years ago, then it seems a fitting way to end of our days and be returned to the water. So I painted this to honour those wishes, the places and locations of those waters will be attached to the back the work.



theWhitworth

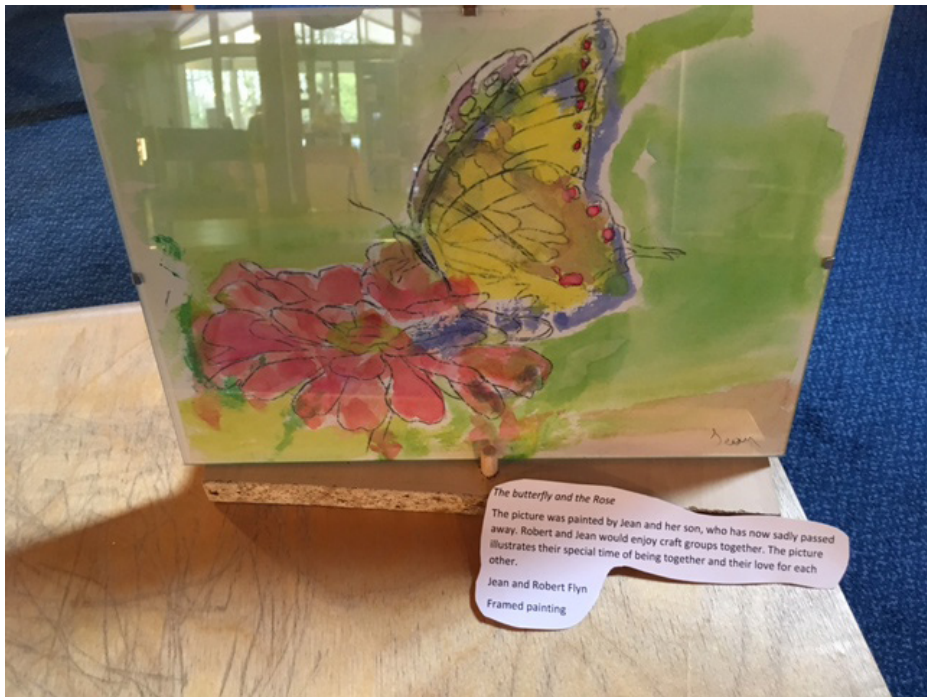


NHS
Greater Manchester and Eastern Cheshire
Strategic Clinical Networks

NHS
National Institute for
Health Research

Postcards sponsored by NIHR CLAHRC Greater Manchester

The National Institute for Health Research Collaboration for Leadership in Applied Health Research and Care (NIHR CLAHRC) Greater Manchester is a partnership between providers and commissioners from the NHS, industry, the third sector and the University of Manchester. We aim to improve the health of people in Greater Manchester and beyond through carrying out research and putting it into practice. <http://clahrc-gm.nihr.ac.uk>



The butterfly and the Rose

The picture was painted by Jean and her son, who has now sadly passed away. Robert and Jean would enjoy craft groups together. The picture illustrates their special time of being together and their love for each other.

Jean and Robert Flynn

Framed painting

The Butterfly and the Rose

Jean and Robert Flynn

The picture was painted by Jean and her son, who has now sadly passed away. Robert and Jean would enjoy craft groups together. The picture illustrates their special time of being together and their love for each other.



theWhitworth



Postcards sponsored by NIHR CLAHRC Greater Manchester

The National Institute for Health Research Collaboration for Leadership in Applied Health Research and Care (NIHR CLAHRC) Greater Manchester is a partnership between providers and commissioners from the NHS, industry, the third sector and the University of Manchester. We aim to improve the health of people in Greater Manchester and beyond through carrying out research and putting it into practice. <http://clahrc-gm.nihr.ac.uk>