

Palliative Care Research in Manchester

Collaboration for Leadership in Applied Health Research and Care (CLAHRC) Greater Manchester

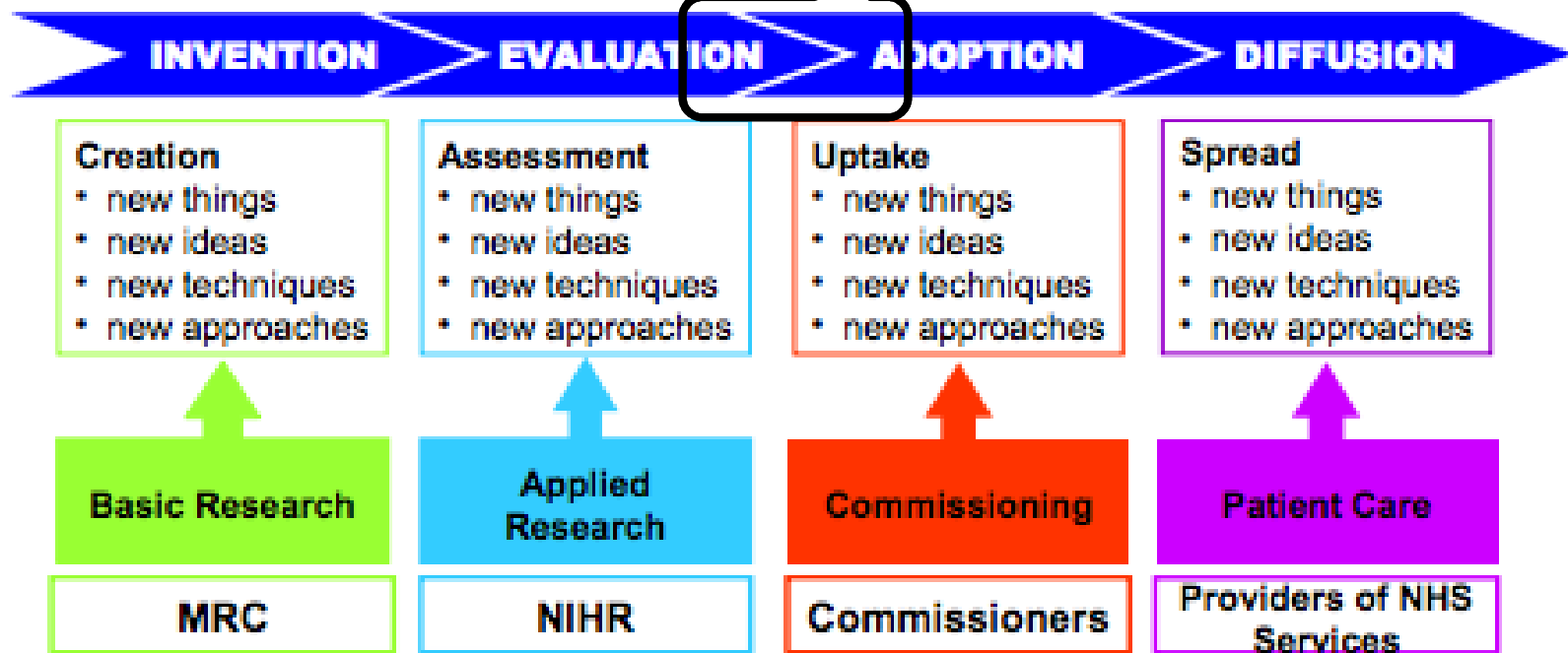
17th Nov 2015

Prof. Gunn Grande

Michael Spence

The Research Pathway

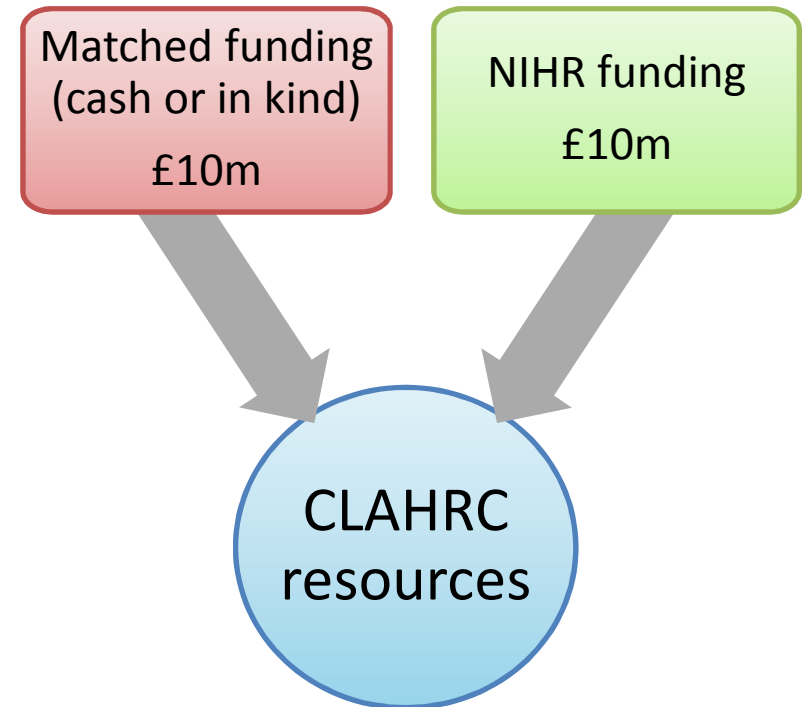
CLAHRCs: bridging a gap in translation



*“NIHR CLAHRCs address the **evaluation** and **identification** of those **new interventions** that are effective and appropriate for everyday use in the NHS and the **process of their implementation** into routine clinical practice”*

Large scale NIHR investment

“£124 million has been allocated to 13 new collaborations that demonstrated a substantial portfolio of world-class applied health research, particularly in research targeted at chronic disease and public health interventions, and held a track record in translating research findings into improved outcomes for patients”



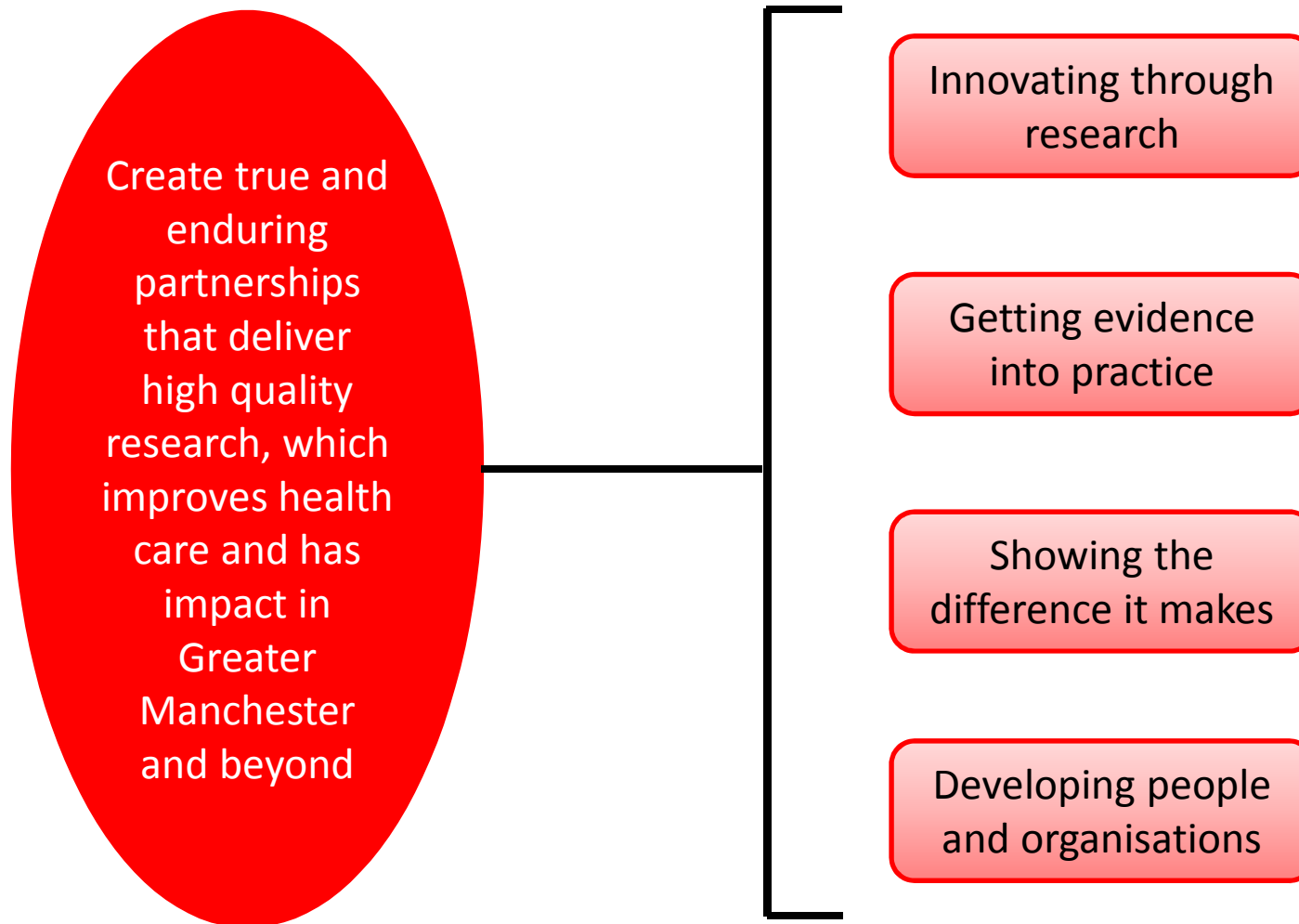
13 CLAHRCs* (one per AHSN)



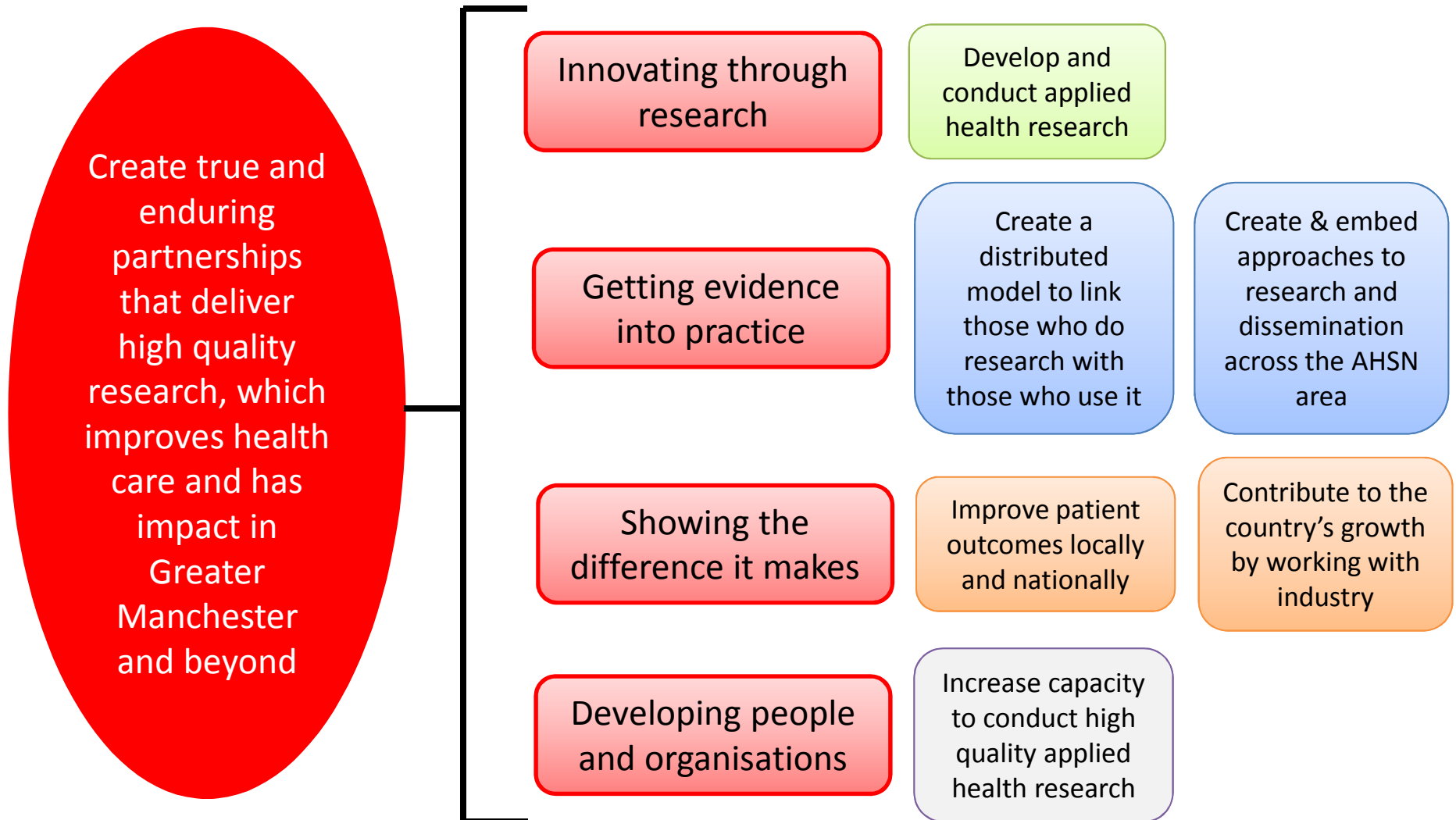
* 2014 - 2019

- NIHR CLAHRC North West London
- NIHR CLAHRC East of England
- NIHR CLAHRC East Midlands (was 2)
- NIHR CLAHRC Greater Manchester
- NIHR CLAHRC North Thames
- NIHR CLAHRC North West Coast
- NIHR CLAHRC Oxford
- NIHR CLAHRC South London
- NIHR CLAHRC South West Peninsula
- NIHR CLAHRC Wessex
- NIHR CLAHRC West
- NIHR CLAHRC West Midlands
- NIHR CLAHRC Yorkshire and Humber (was 2)

CLAHRC GM vision and objectives



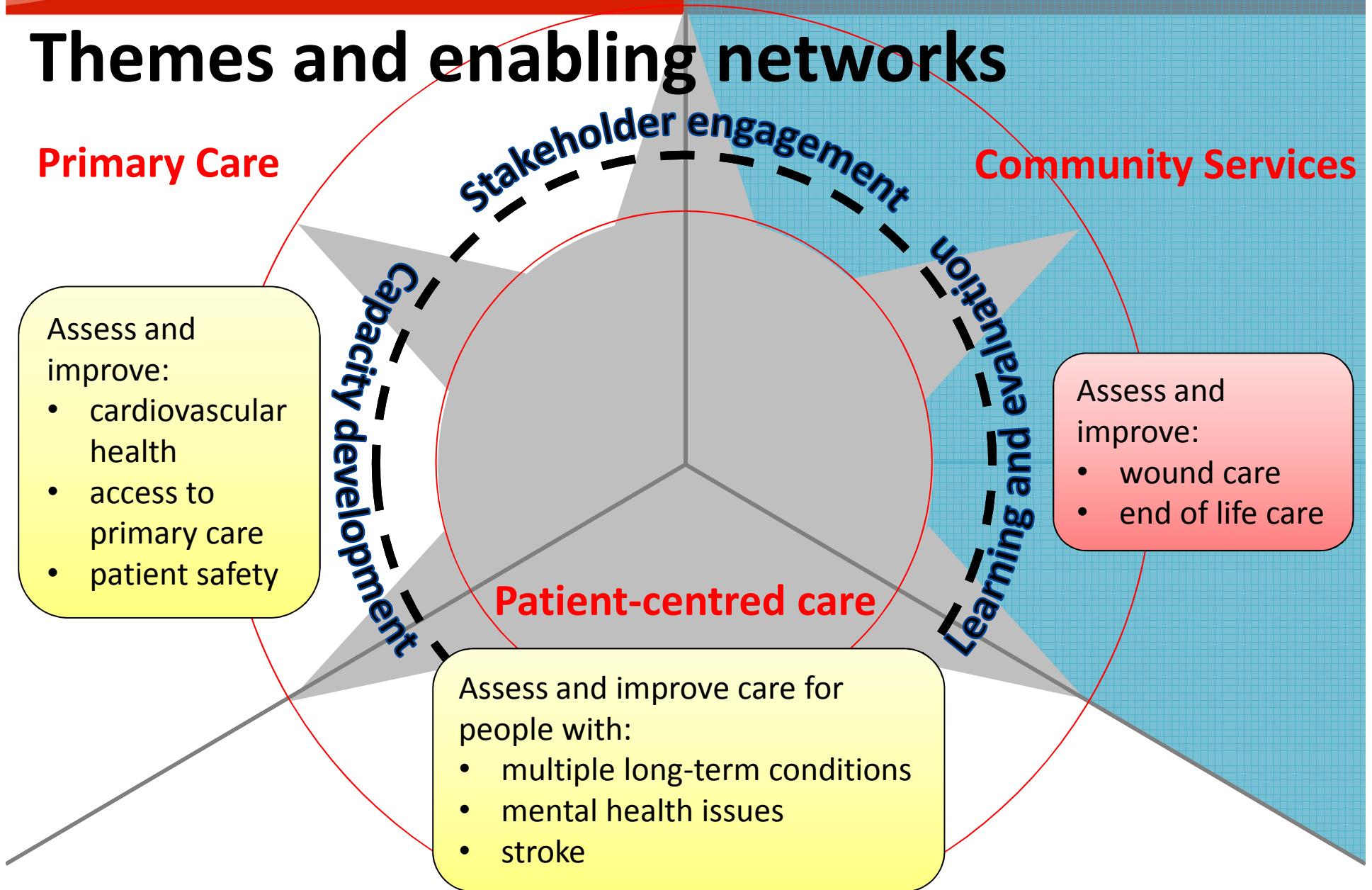
NIHR success criteria



Themes and enabling networks

Primary Care

Community Services



Partners

Primary Care

- NHS Salford CCG
- NHS Central Manchester CCG
- NHS Eastern Cheshire CCG
- Greater Manchester CCGs Service Transformation Team
- NHS England Greater Manchester Local Area Team (LAT)
- GM Academic Health Sciences Network (AHSN)

Community Services

- Marie Curie
- Macmillan
- Central Manchester University Hospitals NHS Foundation Trust (CMFT)
- Salford Royal NHS Foundation Trust (SRFT)
- University Hospital of South Manchester Foundation Trust (UHSM)
- Pennine Care NHS Foundation Trust
- Dimbleby Cancer Care

Patient-centred care

- Manchester Mental Health and Social Care NHS Trust (MMHSCT)
- Mental Health Matters and Inclusion Matters (Merseyside)
- South Staffordshire and Shropshire Partnership NHS Trust
- Heidelberg Engineering
- Arthritis UK Epidemiology Unit
- Manchester Academic Health Sciences Centre (MAHSC)
- The North of England Health e-Research Centre (HeRC)
- The Stroke Association

Greater Manchester



And beyond ... East Cheshire, Merseyside

Community services

'We aim to build relationships and create new networks of community service providers, by putting into practice locally relevant research evidence in the areas of wound care and end-of-life services. This will lead to the development of new opportunities and partnerships for research.'



Theme Lead

Prof. Nicky Cullum

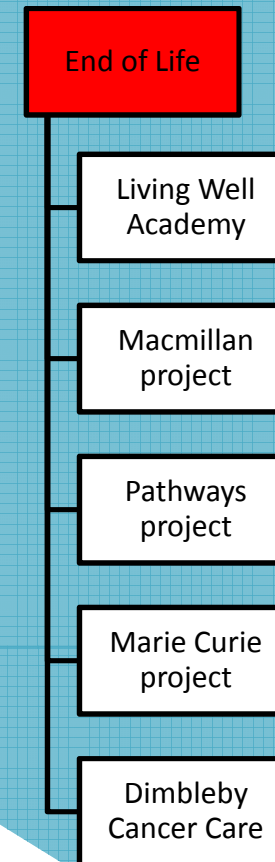
nicky.cullum@manchester.ac.uk



EoL Lead

Prof. Gunn Grande

Gunn.Grande@manchester.ac.uk



End of Life

Vision:

To support high quality end-of-life care in the community, prevent unnecessary hospital admissions and facilitate appropriate hospital discharges.

Stage 1:

- a) Mapping of end-of-life pathways to support care at home
- b) Supporting family carers

Stage 2:

- c) Build networks of professional stakeholders, informed by active service user involvement
- d) Collaborate to undertake new research regarding EoL within the community

Stage 3:

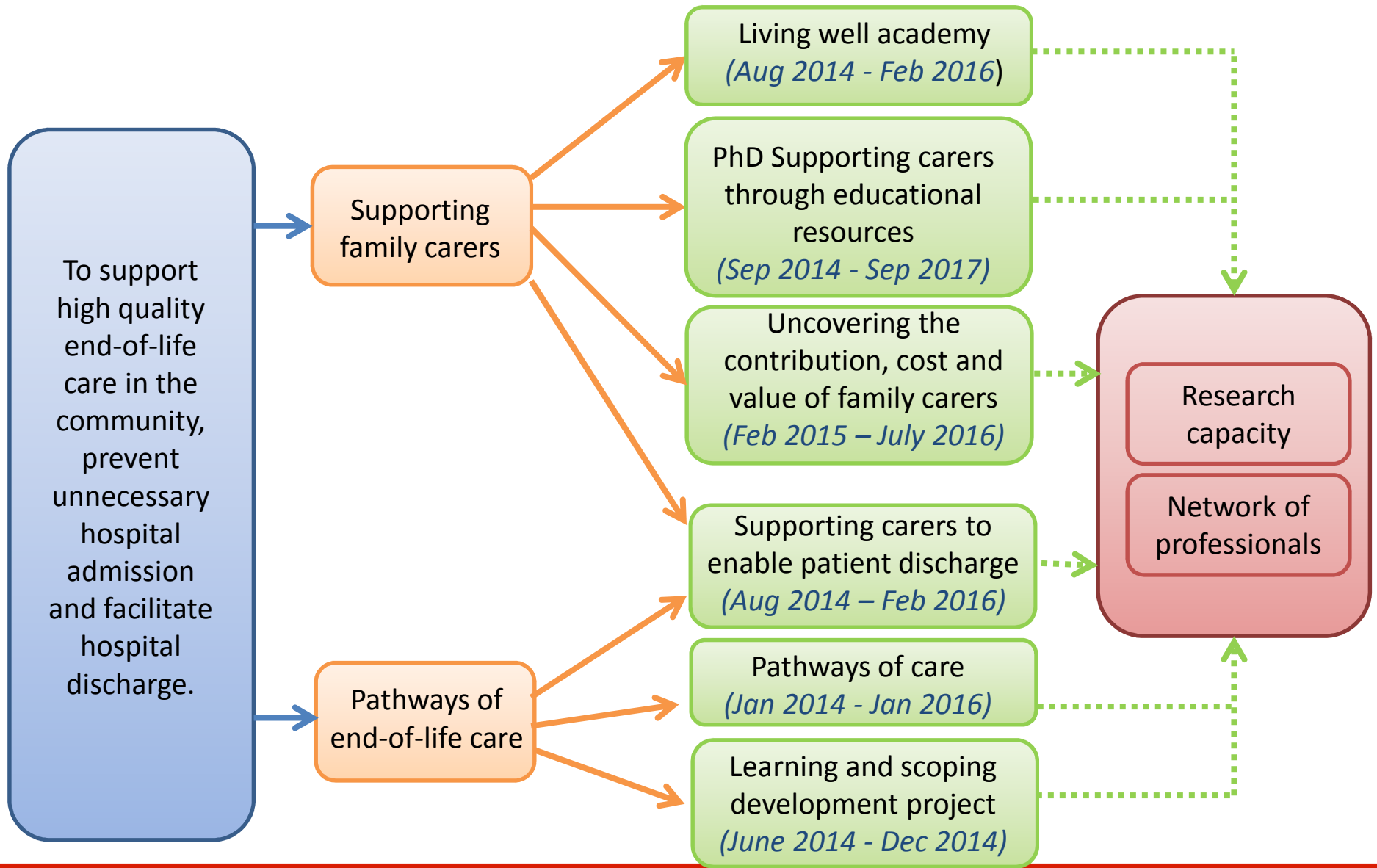
- e) To develop new knowledge about how research findings can be implemented into practice in community services

Vision

Focus

Projects

Enabling Networks



Supporting Carers: Through Educational Resources (1)

Pennine Living Well Academy:

- A carer education programme, utilising evidence based co-design and co-delivery.
- Delivered through a mix of face to face sessions and online material
- We are providing an evidence scan of existing resources regarding:
 - End of life
 - Stroke
 - Diabetes
 - COPD
 - Cardiovascular disease

Supporting Carers: Through Educational Resources (2)

PhD Developing and Implementing an Education Resource Booklet:

- Family carers have little preparation for practical care tasks at home and learn by trial and error
- This PhD builds on a previously developed Cancer Resource Booklet supporting family carers to undertake practical care giving at home, to adapt for use as community practice intervention
- It will include participatory approaches to implementation of Resource Booklet in community practice.

Supporting Carers: At discharge

Background:

Family carers play a central role in supporting successful discharge from acute care to community at end of life, but they have little involvement in discharge planning or preparation

Aim:

To improve support for carers at discharge

To utilise and adapt a Carer Support Needs Assessment Tool



Carer Support Needs
Assessment Tool

Supporting Carers: At discharge

Methods:

- Funded through Marie Curie
- Focussed on discharges from Central Manchester University Hospitals NHS Foundation Trust (CMFT)
- Involving:
 - Qualitative interviews with bereaved and current carers to explore content, timing and format of support they required during discharge
 - Focus groups and interviews with acute and community health and social care professionals
 - Consultative workshops on how to adapt and integrate carer support needs assessment into discharge pathways

Supporting Carers: The cost and contributions of family carers at EoL

Background:

Family care giving is vital in enabling care at home at EoL, but is not quantified and remains 'invisible'

Aim:

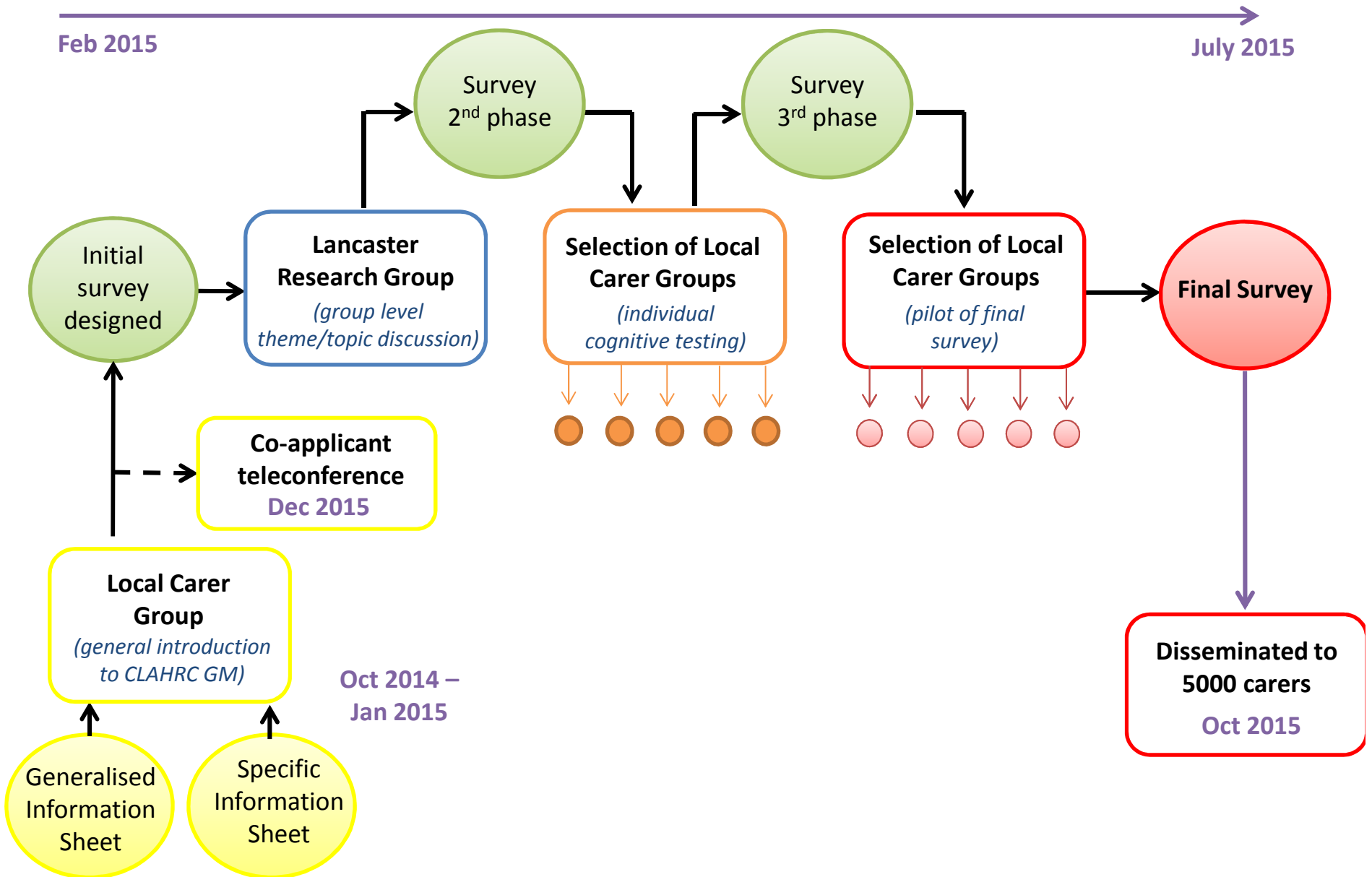
To measure the costs, contributions and impact of family care giving at EoL



Supporting Carers: The cost and contributions of family carers at EoL

Methods:

- Funded through Dimbleby Cancer Care
- Focus on carers of cancer patients in first instance, however not exclusively
- Development of content and format of survey with local user groups – 3 stage process utilising
 - Group discussion
 - Individual cognitive testing
 - Pilot survey
- National survey of bereaved carers via the Office of National Statistics



Pathways of EoL care (1)

Mapping pathways of EoL care across Greater Manchester

Exploring performance in relation to the facilitation of Death in Usual Place of Residence

- Builds on similar project conducted in 2011-12 in three boroughs of Greater Manchester which identified a number of factors supporting high quality care

Phase 1:

- Quantitative investigation of performance across 11 regions in Greater Manchester

Phase 2:

- Qualitative investigation of the underlying factors affecting performance to identify critical success factors for high quality, choice-led EoL care

Pathways of EoL care (2)

Scoping Cancer Learning Needs (Macmillan Cancer Improvement Partnership)

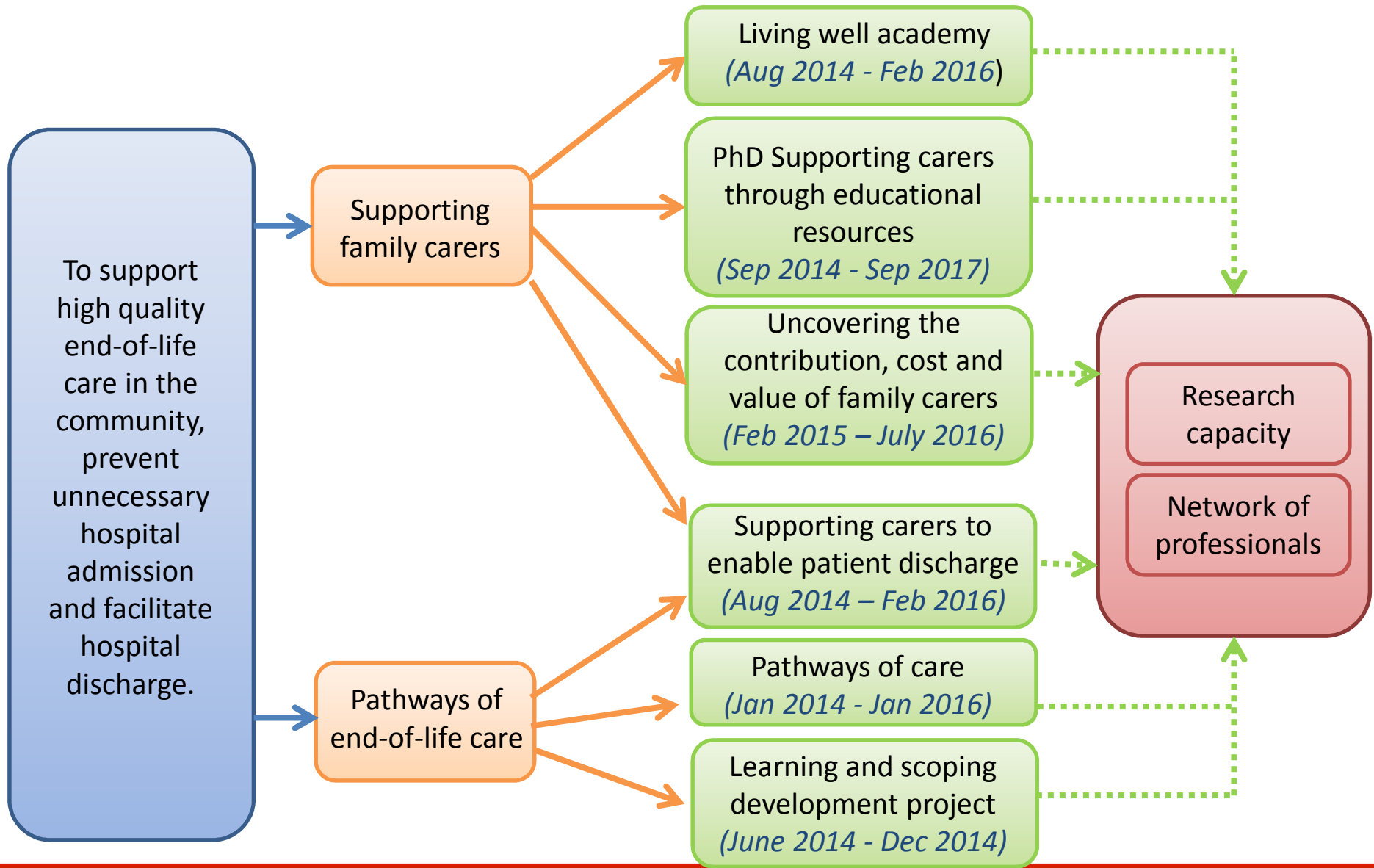
- Mapping of workforce delivering cancer care across the cancer pathway, utilising telephone and face to face interviews
- Staff learning needs analysis to identify skills, knowledge and gaps was undertaken through an electronic questionnaire
- Utilised existing standards and user input via a PABC focus group
- Existing resources to meet skills and knowledge gaps were identified
- Recommendations for cancer education for different workforce groups have been made

Vision

Focus

Projects

Enabling Networks



For more information about any of our end of life work or more general information about CLAHRC GM please contact:

Michael Spence

Michael.spence@srft.nhs.uk

Tel: 07720 948 915

Discussion

- What are common interests between CLAHRC GM and PRiMA?
- How may CLAHRC GM and PRiMA work together?