

The NIHR Collaboration for Applied Health Research and Care (CLAHRC) Greater Manchester

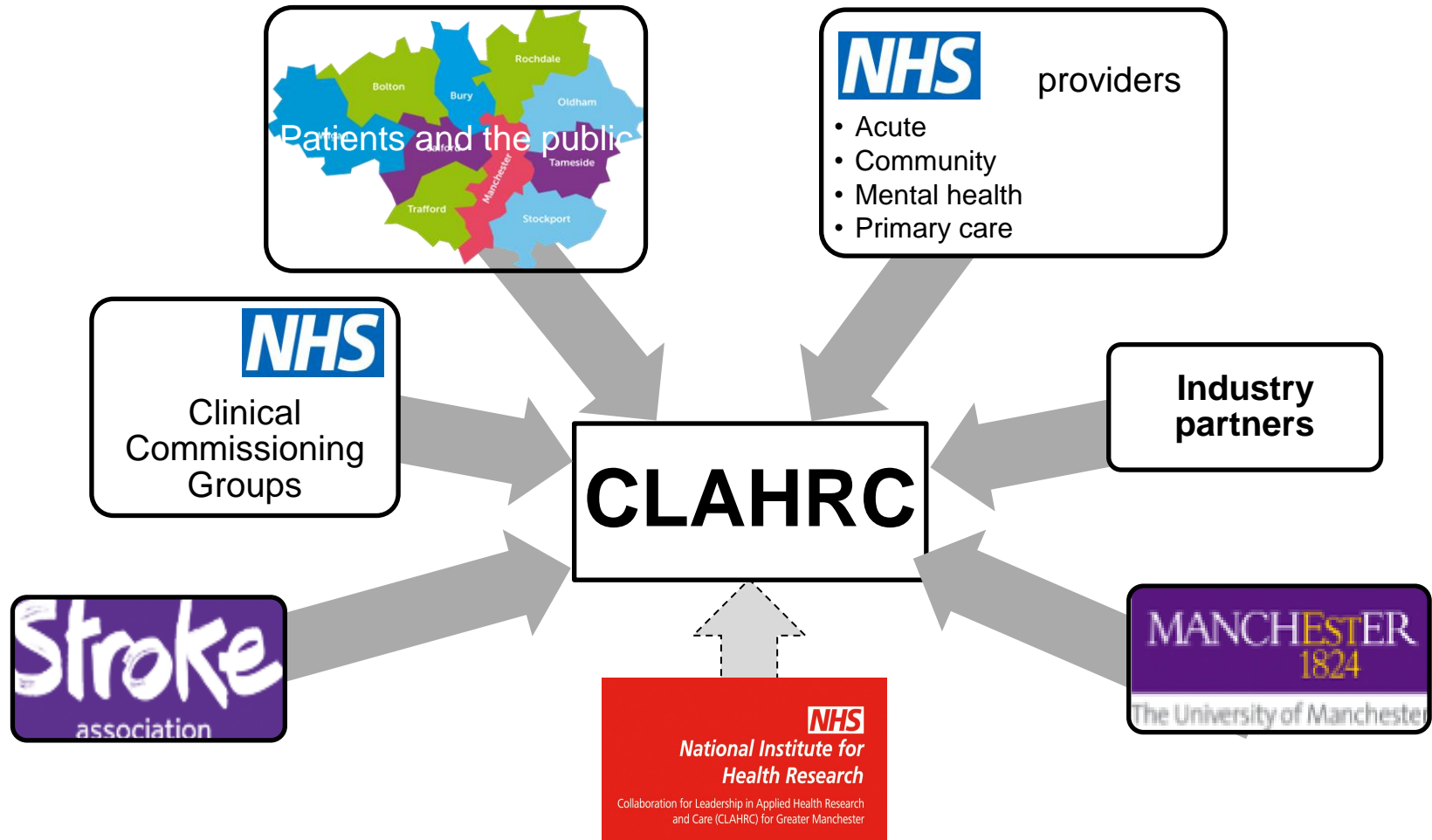
Ruth Boaden
Director, CLAHRC GM
Professor, Manchester Business
School

What I am going to cover



1. What is it?
2. How does it link to the strategy?
3. How can you be involved?

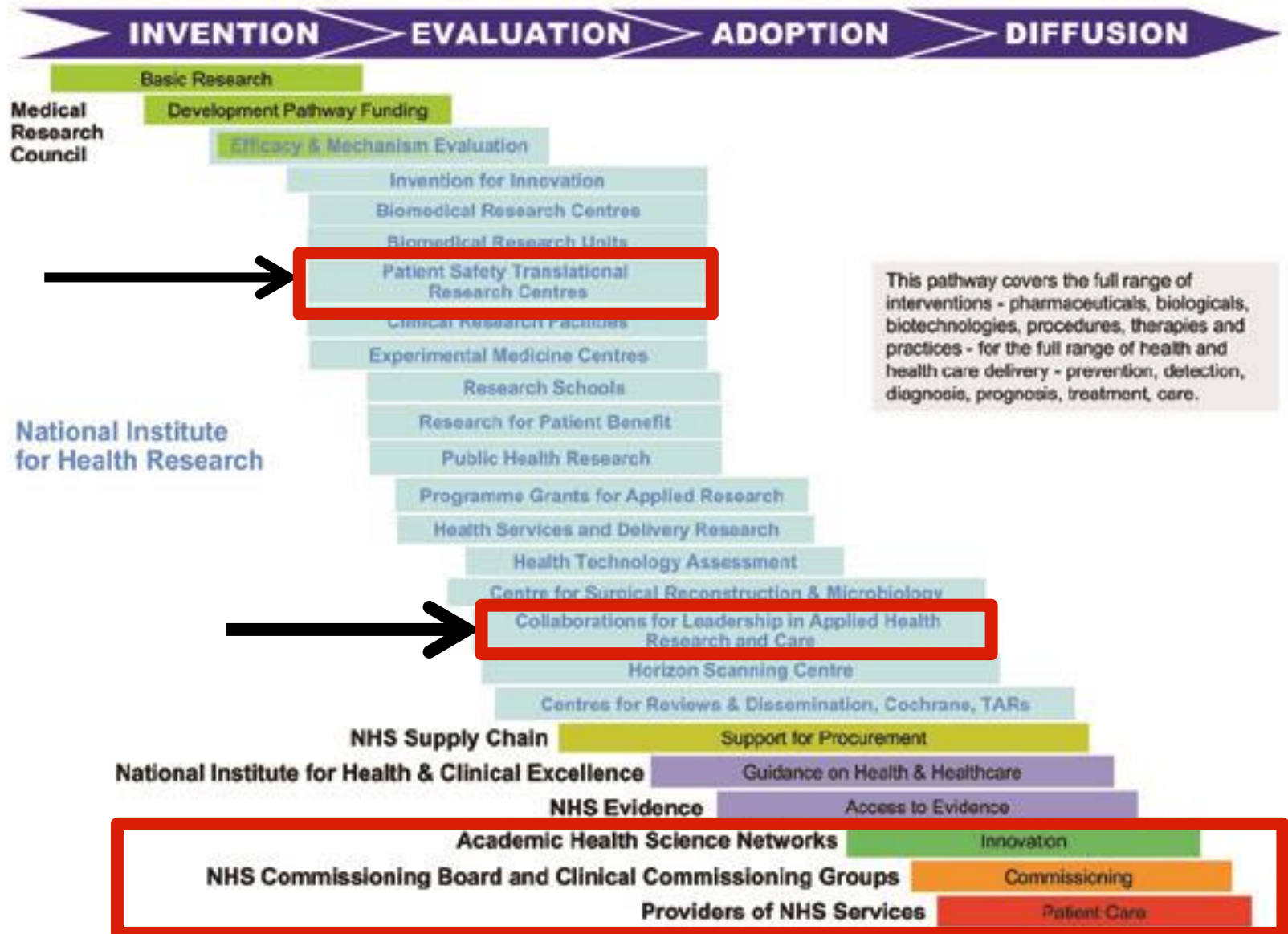
CLAHRC is a Collaboration



We aim to improve the health of people in Greater Manchester by:



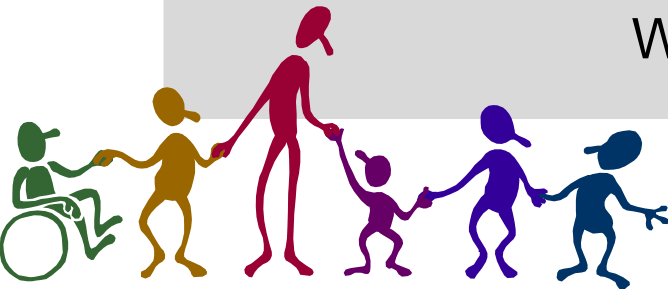
The central role of NIHR research in the innovation pathway



What is the need for CLAHRC?

We know that lots of research about 'what works' doesn't get put into practice.

We are here to change that:

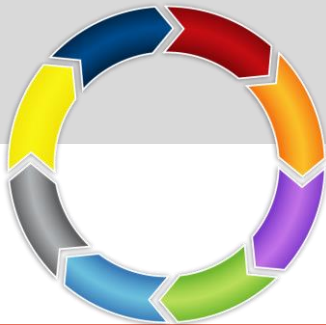


By doing research in participatory ways

Involving those who will use the research from the start of the process

What is the need for CLAHRC?

We also know that lots of attempts to put research into practice, and to change individual, team and organisation behaviour, don't succeed



We are here to change that:



By putting research into practice and learning from that process

So that we learn about 'how' to do this and can apply these lessons more widely

Our themes of work

Assess and improve care for people with:

- multiple long-term conditions;
- mental health issues;
- stroke

Patient-centred care

Assess and improve:

- cardiovascular health;
- access to primary care;
- patient safety

Community services

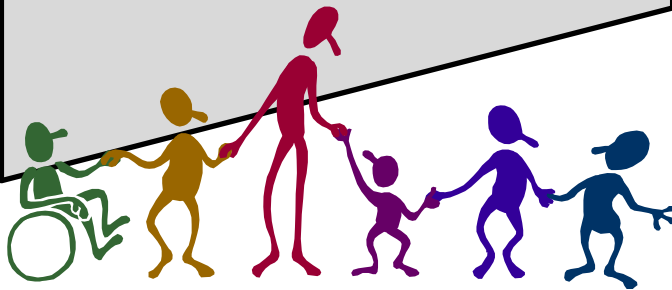
Assess and improve:

- wound care;
- end of life care

Primary care

How do we work?

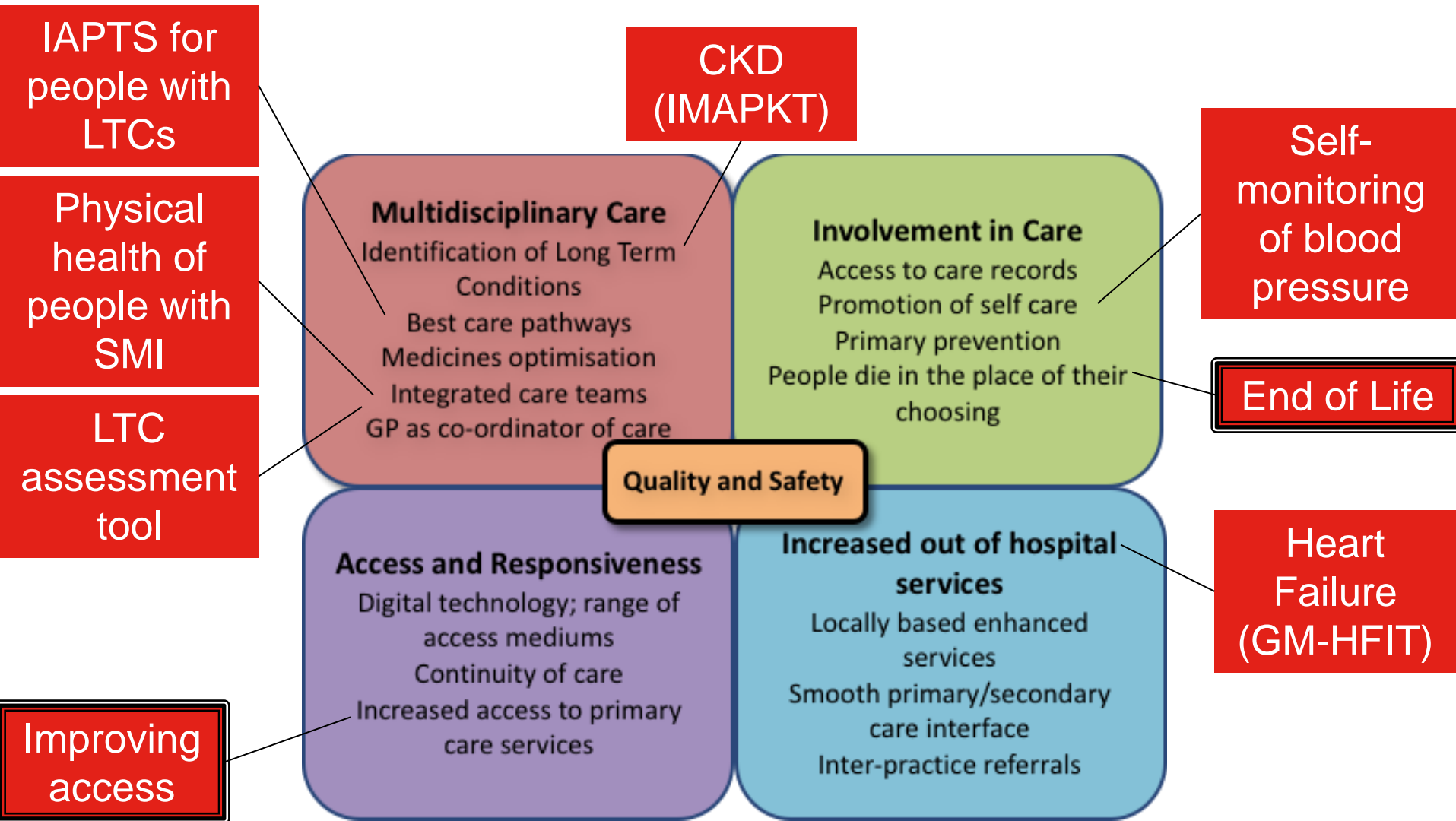
Collaboration for
Leadership in
Appplied
Health
Research and
Care



Projects are carried out by:

- staff from partner organisations
- working in teams with CLAHRC GM staff
 - that include researchers from the University of Manchester **and**
 - project management and improvement specialists from the NHS

How does it link to the strategy?



<http://clahrc-gm.nihr.ac.uk/>

For example ... CKD in primary care

[Home](#)[About](#)[Get Started](#)[My IMPAKT™](#)[CKD Resources](#)

NHS
National Institute for
Health Research

Improving Patient care and Awareness of Kidney disease progression Together

Implementing IMPAKT can:

- ➔ Improve the management of CKD in patients with co-morbidities, influencing multiple QoF registers



GET
STARTED



READ
INSTRUCTIONS
& DOWNLOAD
TOOL

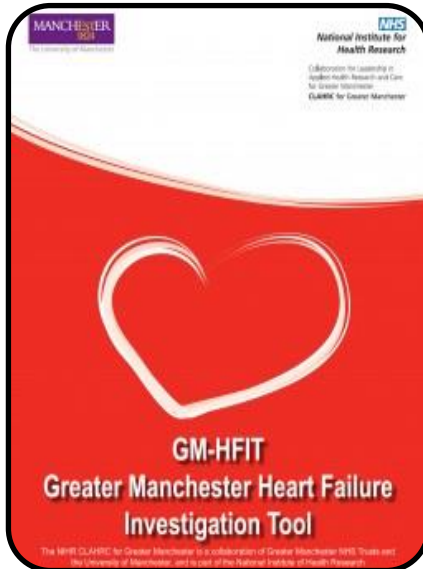


UPLOAD YOUR
DATA TO
MY IMPAKT



VIEW
PERSONALISED
REPORTS TO
IMPROVE CARE

For example ... management of heart failure in primary care



Prevalence increased through 632 patients being identified as suitable for the heart failure register

Re-audit now underway to demonstrate improvement in skills and management

26
practices
in NHS
Bury

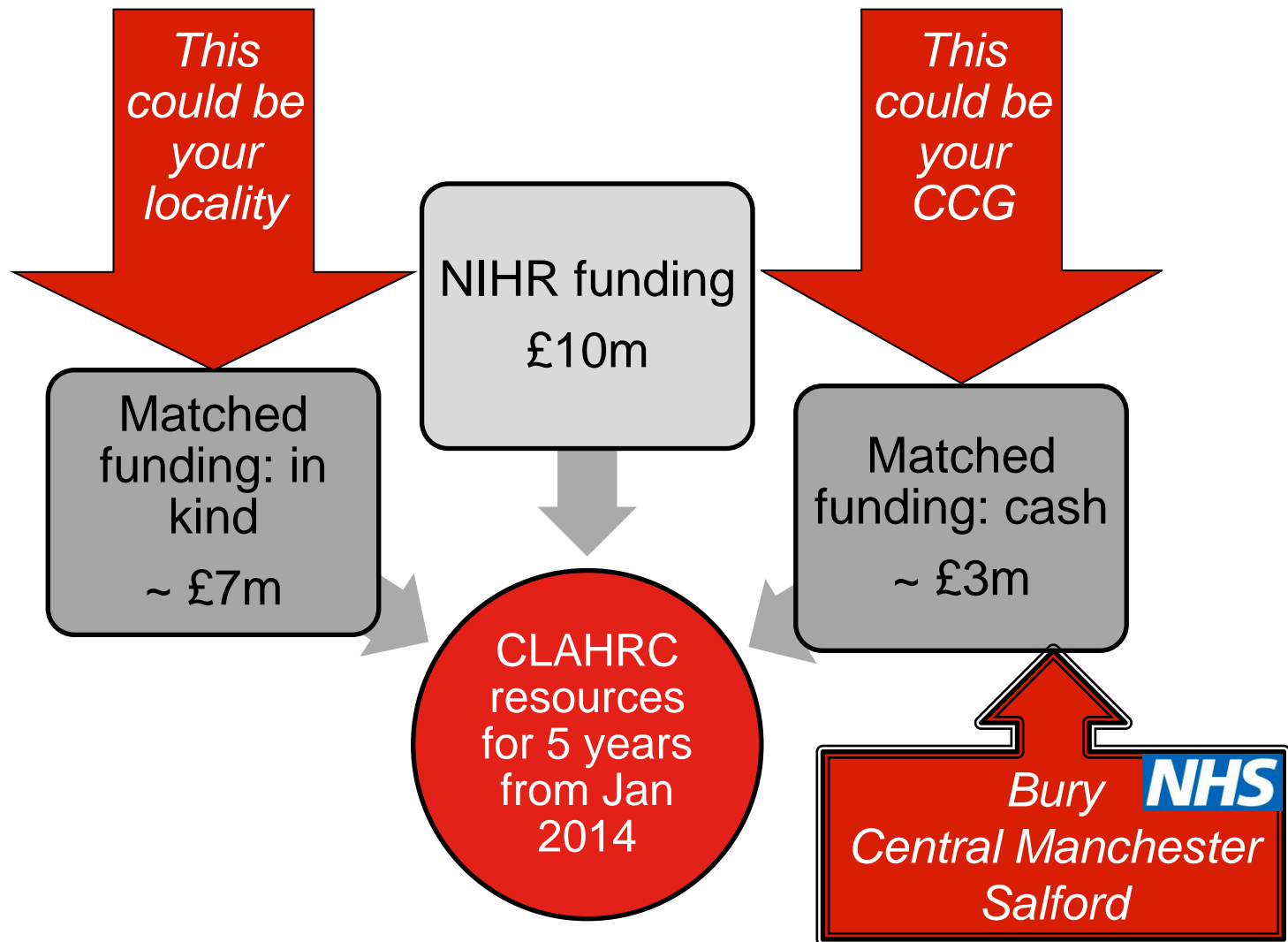
case finding to identify patients 'missing' from the heart failure register;

verification of existing heart failure registers;

clinical education;

facilitated quality improvement periods

How can you be involved?



What next?



Talk ...

... With other practices in your locality
... with your CCG
... with NHS England

Identify resources and get in touch to agree priorities ...

... with the CLAHRC team: clahrc@srft.nhs.uk